

# A secure VoLTE POTS line replacement solution for critical communication.

Do you have traditional landline devices you cannot remove or replace? You still have time to move analog devices, such as emergency phones, alarms, dialers, and door access controllers to the cellular network.



## Potential benefits

- Secured over VoLTE network
- NO external VoIP platform
- NO third-party integrations
- Quick and easy installation
- Dial tone up in minutes

## Device applications

- Emergency phones
- Elevator phones
- Pool phones
- Blue light phones
- “Red phones” in schools
- Burglar alarms
- Door/gate access controllers
- Industrial SCADA dialers
- PSTN Analog STE (Secure Telephone Equipment)

With AT&T POTS Line Replacement, installing a solution that simultaneously leverages both the voice and data networks for mission-critical devices has never been so simple.

- Improved call quality: VoLTE uses high-definition voice codecs, which provide better voice quality than traditional circuit-switched voice calls.
- Lower latency, widespread compatibility for analog devices that need low latency to function properly.
- Carrier Service Licensing Agreement (SLA) - is intact, very important for life safety device applications.
- Secure end-to-end VoLTE powered encryption.



### What is POTS line replacement?

POTS (Plain Old Telephone Service) line replacement refers to the process of replacing traditional copper telephone lines with newer technology, such as digital or Internet-based systems. This can include

replacing analog telephone lines with digital lines, or replacing traditional telephone infrastructure with Internet-based voice over LTE (VoLTE) systems. The goal of POTS line replacement is to improve the reliability and capabilities of telephone service while also reducing costs for businesses.

### Installation Example: POTS line replacement for mission-critical analog PSTN devices

**Elevator 1 / Camera 1**  
RJ-11 to Call Box / RJ-45 to Camera

**Elevator 2 / Camera 2**  
RJ-11 to Call Box / RJ-45 to Camera

**Access Door Controller / Security Camera**  
RJ-11 to Access Door Controller / RJ-45 to Camera

**Blue Light Emergency Phone / Camera**  
RJ-11 to Blue Light Phone / RJ-45 to Camera

**Battery Backup - Pro Series**

**Dial Tone Testing Phone**  
Inbound / Outbound Calling

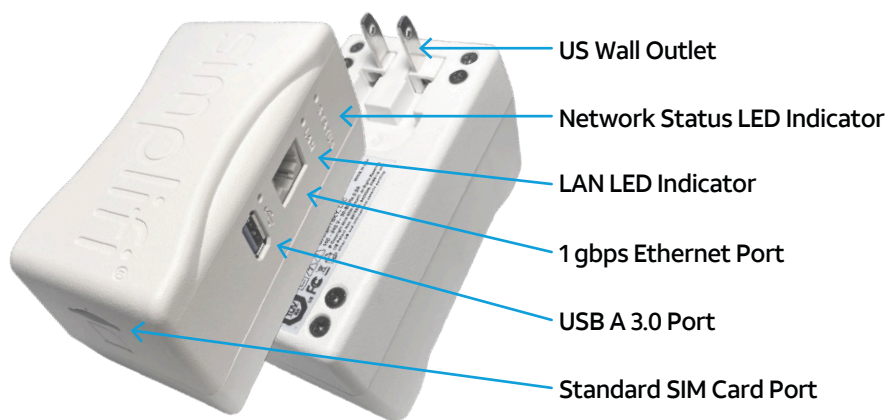
**Alarm 1 (w/ 24 Hour Battery Backup)**

**Alarm 2 (w/ 24 Hour Battery Backup)**





## Support your critical analog POTS line devices with Simplifi Connect II LTE router.



4G LTE



WiFi 5



Standard SIM



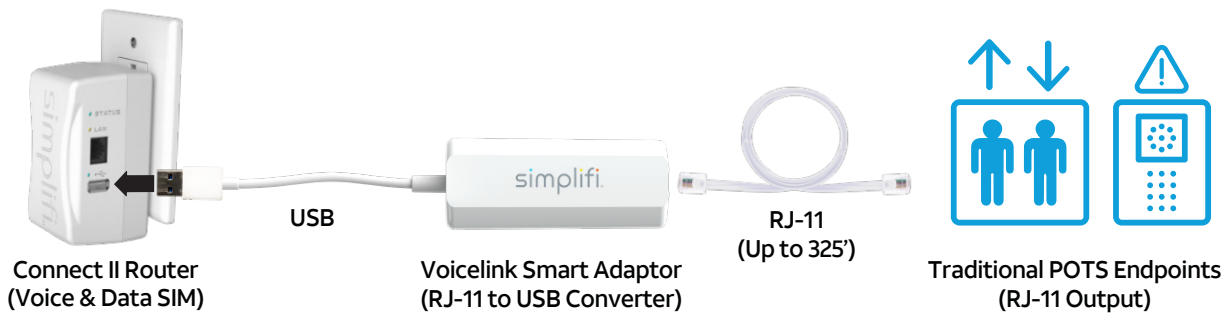
VPN



Mobile App

### Specifications: Simplifi Connect II LTE router

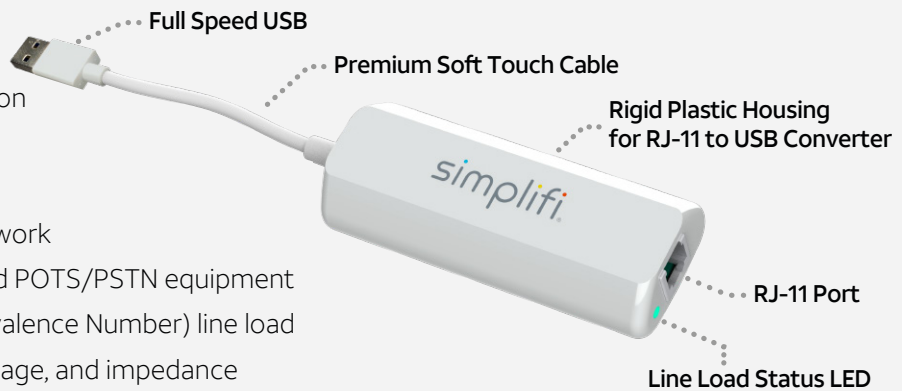
<b>Networks</b>	BS6425L-AF-11 LTE FDD: B2/B4/B5/B12/B13/B14(FirstNet)/B66/B71 WCDMA: B2/B4/B5 BS6425L-A-11 LTE FDD: B2/B4/B12 WCDMA: B2/B4/B5 BS6425L-V-11 LTE FDD: B4/B13	<b>LED Indicators</b>	Cellular network status (1 ea.) LAN traffic (1 ea.) USB traffic (1 ea.)
<b>Data Speeds</b>	LTE - FDD CAT4 Max150Mbps (DL), Max 50Mbps (UL) DC-HSPA+ DL 42 Mbps HSUPA - UL 5.76Mbps	<b>Power Supply Requirements</b>	120 /240 VAC at 10VA (10W) max
<b>WLAN</b>	Dual-Band/ 802.11 b/g/n/ac, WPA / WPA2/WPA2 Enterprise	<b>Outline Dimensions</b> (Less AC prongs and mounting tab)	4.1" (104mm) Height 2.2" (56mm) Width 2.0" (51mm) Depth
<b>USB (3.0)</b>	USB (Host) HS and FS	<b>Weight</b>	7 oz (198 g)
<b>LAN</b>	RJ-45 Modular Jack on side panel for TCP / IP, PPP, UDP (10/100/1000 Base-T)	<b>Operating Temperature</b>	-10°C to +40°C
<b>SIM</b>	1.8V and 3.0V standard USIM (2FF)	<b>Storage Temperature</b>	-30°C to +70°C
		<b>Approvals</b>	PTCRB, 3GPP FCC parts 2 and 15 CE, TUV
		<b>Patents</b>	US Patent Nos. 8676254, 9402326, 9485116 with other US and international patents pending.



## Convert your analog device to cellular with Voicelink.

### What's inside?

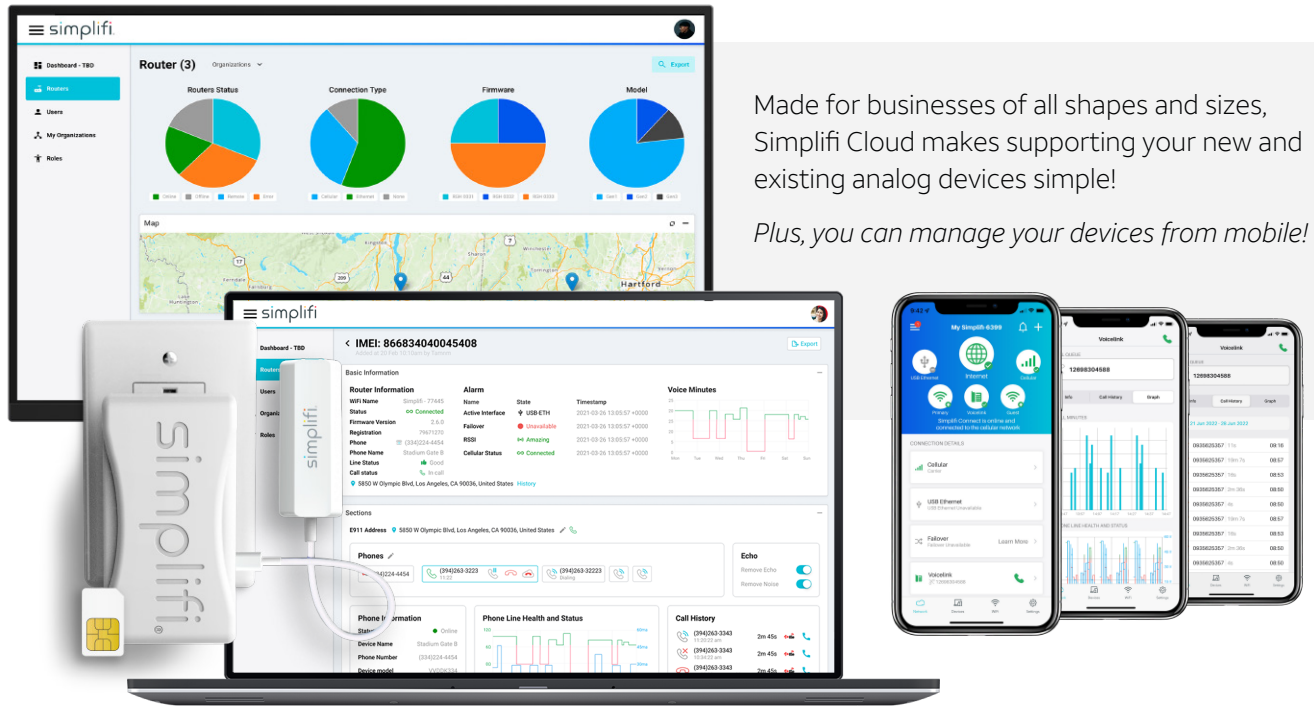
- On board echo cancellation
- DTMF tone stabilization
- Up to 16 kHz HD audio
- Compatible with LTE network
- Compatible with standard POTS/PSTN equipment
- Up to 2 REN (Ringer Equivalence Number) line load
- Measure line current, voltage, and impedance



### Specifications: Simplifi Voicelink VoLTE POTS line adaptor

Certification/Compliance Standard	Description	Status
UL62368-1	Audio, Video, Communication Electrical Safety	Certified
FCC Part 15B Class B	FCC EMC Conformity	Certified
NFPA72	National Fire Alarm and Signaling Code®	Compliant
ASME A17.1	Elevator Code	Compliant
PCI	Payment Card Industry Encryption	Compliant
HIPAA	Health Privacy	Compliant
UL1610	Central-Station Burglar-Alarm Systems	Compliant
UL985	Fire Warning Control Systems	Compliant
UL1023	Household Burglar Alarm systems	Compliant
UL864	Accessories for Fire Alarm Systems	Compliant
UL2525	Two-Way Emergency Communications/Area of Refuge	Compliant

# Go anywhere with the smartest analog to cellular POTS line replacement solution, powered by Simplifi Cloud remote management portal.



Made for businesses of all shapes and sizes, Simplifi Cloud makes supporting your new and existing analog devices simple!

*Plus, you can manage your devices from mobile!*

## Why AT&T

AT&T owns and operates wireline, wireless, and IP data networks, including one of the world's most advanced and powerful IP backbones. Our networks offer local, national, and global coverage. Our customers trust us to provide quality products or services. We have solutions to meet your unique business needs.

Contact your AT&T representative for more information.

© 2023 AT&T Intellectual Property. AT&T and globe logo are registered trademarks and service marks of AT&T Intellectual Property and/or AT&T affiliated companies. All other marks are the property of their respective owners.

Important information General: Simplifi Connect + Voicelink as described in this product brief (the "Solution") is available only to eligible Customers with a qualified AT&T agreement ("Qualified Agreement"). The Solution is subject to (a) the terms and conditions found at <https://www.simplifi.io/purchase-terms> ("Additional Product Terms"); (b) the Qualified Agreement; and (c) applicable Sales Information. For government Customers, any Additional Product Terms not allowable under applicable law will not apply, and the Qualified Agreement will control in the event of any material conflict between the Qualified Agreement and the Additional Product Terms. Any service discounts, equipment discounts, and/or other discounts set forth in the Qualified Agreement do not apply to the Solution. The Solution may not be available for purchase in all sales channels or in all areas.

Additional hardware, software, service and/or network connection may be required to access the Solution. Wireless service is subject to transmission, terrain, system, capacity, and other limitations. Availability, security, speed, timeliness, accuracy, and reliability of service are not guaranteed by AT&T. When outside the coverage area, access will be limited to information and applications previously downloaded to or resident on your device. Additional charges and other restrictions apply. Depending on the wireless carriers, all technical support, voice, messaging and data usage will be subject to the applicable rates and terms of that wireless carrier(s). Refer to applicable wireless carrier for such rates, terms, and conditions.